

# Gibber Gabber

## Wamboin PC Instructor's Rally Day Report

12 February 2012

It was a small but enthusiastic group of members who attended the first rally day of the year for Wamboin Pony Club. Our Secretary, Jeni, was very organised with the paperwork which meant that 2012 registration was efficient and speedy.

On the day, eight junior/associate riding members attended, with Victoria Evans only able to attend after lunch.

The grounds were wet after recent rain and unfortunately a vehicle had been on the main arena performing doughnuts, so gear check and warm up was conducted in the smaller show jumping arena. This was a good opportunity to assess our two new members, Zoe and Ellie Haseler (previous members of Breadalbane Pony Club).

The small group of six riders was split into two groups of three, with Amy, Laura and Kaitlin progressing to jumping exercises with Toni and Nicole, whilst Ellie, Zoe and Caitlin moved to the dressage arena for some flat work exercises with Marion. After an hour, the groups swapped activities.

Lunch was thanks again to the catering by the Evans family (Alison, Amy & Peter), assisted by Terri Brown. A short discussion with all members was had around upcoming events – Zone 16 Sporting and Jumping Equitation and Zone 16 Camp. The Feed Shed feed draw was won by Nicole and Tracey.

First up after lunch the riders undertook an unmounted activity in three groups – “preparing your camp stall for Sunday inspection”. Each team (team leaders were Amy, Laura and Victoria) were given a copy of the 2012 “What do I need to bring?” sheet from the Camp Information pack. They then had to go and prepare as well as they could from the gear they had available for their inspection in 30 minutes. Paper and pens were available to “create” any missing items from the list. Laura’s team were acknowledged for being the most efficient; Amy’s team was the most organised; and Victoria’s team was the most creative. Parents were also involved so that could get an understanding of what instructors’ are checking for at the real live camp – this seemed appreciated as there were several questions answered. Team leaders were also quizzed on how to prepare their horses for camp, all ticking the boxes of 1. Some degree of pre-camp fitness and 2. Introduction of hard feeds pre-camp.

Whilst the unmounted activity was underway, this allowed for the main arena to be set up for some sporting games. Thanks to Les who assisted Marion and Nicole. The last riding session involved riders learning the rules of Ben Bar Aft, Stockhorse Race and Diamond Flag. Thanks to Nicole and Amy who each instructed a game so riders could rotate through the three games. The day concluded with 3 races of Run and Ride, with some dispute about who ended up with the highest points or best of 3. The judge’s verdict was that Kaitlin Brown was the victor, but Victoria Evans had a different view. No-one could dismiss the second place in the last race of Ellie and her stead “Nicole”. All agreed it was a fun way to end the day, thanks to Laura for making the suggestion. Thanks to everyone who helped pack up and lock up.

Marion Whalan, Instructor

This little miniature horse was born at a stud farm in Victoria, and is only 30cms in height, while silver dun overo in colour.



The horse, currently only a little taller than this book, is expected to grow to about 56 centimetres.

### Wamboin Pony Club

#### Horse fun facts!

- >Horses have better memories than elephants
- >Horses have the largest eyes of any land animal
- >Adult male horses generally have 40 teeth and females 36
- > In the picture below this horse is doing what is called **flehmen**. This is seen more in males than females, especially stallions. Flehmen is known to be a way to direct scents in the air to specialized olfactory glands at the **end of the nasal passage**.



Inside this issue:	Page number
Activities	2
March Rally Day Info	3
State Camp	3
Bungendore Show Report	3
Contact Information	4

# ACTIVITIES

N A I R T S E U Q E  
 K C A H A R U G P S  
 E G P W I C C N T R  
 G A P A L O M I N O  
 A L A E L B A T S H  
 S L L T I B N N U K  
 S O O L O P E E H C  
 E W O A T S C V A O  
 R A S A D D L E L T  
 D Y A P U R R I T S

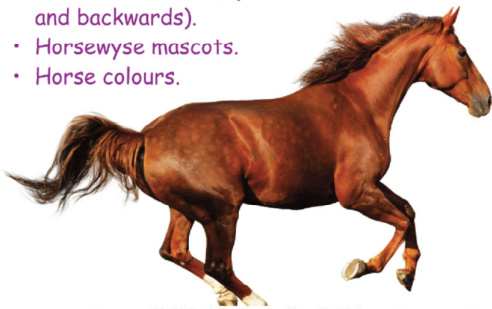
## Word List

Equestrian  
 Tail  
 Palomino  
 Appaloosa  
 Colt  
 Mane  
 Eventing  
 Dressage  
 Stable  
 Stockhorse  
 Stirrup  
 Saddle  
 Hack  
 Galloway  
 Cob  
 Halt  
 Rug  
 Polo  
 Oats  
 Bit



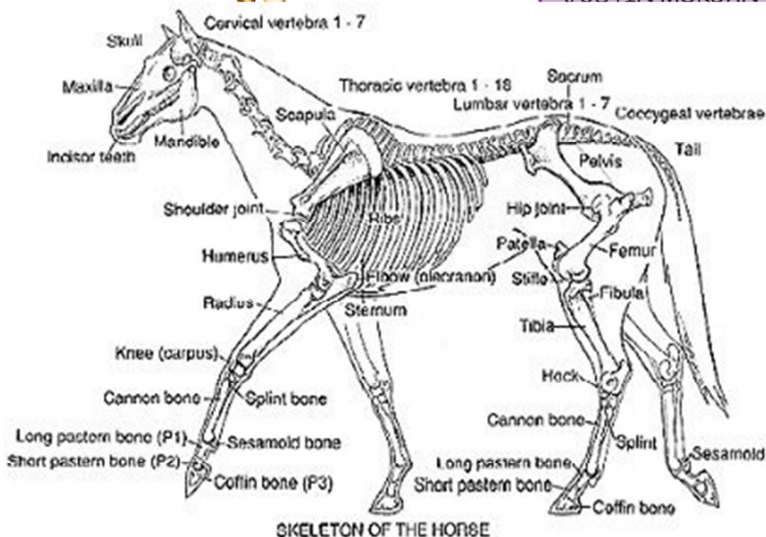
## Process of Elimination!

- Famous horse events.
- Parts of the saddle.
- Pony breeds.
- Horses considered founding stallions of a breed.
- Phases of eventing.
- Palindrome words (spells a word forwards and backwards).
- Horsewyse mascots.
- Horse colours.



Using the clues on the left, cross off the relevant words in the list below, eg. one of the Horsewyse mascots is Soda, so cross that off the list. Keep going until just one word is left. This is pretty tricky so congratulations if you can figure it out! Answers on page 55.

CROSS COUNTRY      BAY  
 MELBOURNE CUP      SHOWJUMPING  
 CHESTNUT              STARBUCK  
 RADISH                  FALABELLA  
 HAMBLETONIAN      DAPPLES  
 CANTLE                  THE GARRYOWEN  
 GAG                      PAINT  
 WELSH MOUNTAIN    STIRRUP  
 SODA                     DRESSAGE  
 SHETLAND              BUCKSKIN  
 THE TOM QUILTY      STRAW  
 GIRTH                    DARLEY ARABIAN  
 JUSTIN MORGAN      GREY



## Getting know what your horse looks like within

**Conformation; keeping it all in Balance.** A horse's basic body conformation will vary by breed, for example the racehorse has basic "athletic" structural attributes. A horse's conformation determines how well it can perform the functions asked of it.

# P.C.A.N.S.W state camp

Wamboin riders Penny Slater, Ally Durr & Laura Worden recently attended the annual NSWPC state camp which was held at the Sydney International Equestrian Centre from the 9th-14th of January. The riders were representing their club in the junior mounted games squad. Each year 15 riders under the age of

17 are selected for the squad at state mounted games and a special selection day. The squad then trains for a week in January, and then monthly leading up to nationals. Around one month before nationals the team of 5 members is selected from the squad of 15. This year nationals is being held in Tasmania in October. We all wish Ally, Laura & Penny

# March Rally Day

The March rally day will be held on the 11th of March. As per usual 9.30am gear check for 10am start. Be prepared to do some showjumping, flat work, polo cross and games. Instructors will be Tracey, Leanne and Lauren.

Tracey D in action



## First Mounted Games Training for NSW squad

On the weekend of the 24th-25th NSW mounted games squad riders, Penny, Laura and Ally attended their first squad training weekend for the year. The training weekend was held in Gunning. Riders travelled out there on the Saturday morning and rode from 9-4pm practicing the skills involved with the different games, and the theory and technique behind each. On the Sunday they rode from 8.30-1pm and had a mini competition to put into practice the skills, technique and theory they learnt from Saturday, as well as the weeklong camp they all attended in January. Lauren also went to the training weekend to assist with the running of and coaching.

## Wamboin Riders At Bungendore Show

There were several riders this year that competed at the Bungendore show; Katie, Lauren, Penny & Laura. The show was held on the 29th of January and a huge array of classes were on offer from pony club classes, sporting and breed classes to showjumping. All four riders competed in the sporting events, while Katie also competed in the Stock

Horse classes. All those riders who attended had a great day and were thankful the weather wasn't 38 degrees like it has been in previous years. Results for each rider are as follows:

Lauren; 1st open flag race

3rd open barrel race

Katie; 2nd open bending race

Penny; 3rd U17 barrel race

3rd U17 bending

## Syd Hill Saddle 4 sale

Syd Hill Suprema saddle. Solid hide. 17 inch seat. \$250 o.n.o contact John Doyle 0429929202



# Wamboin Pony Club

## Produced by: Katie Slater

Contacting Wamboin Pony Club  
Phone & Email:  
Secretary—Jeni Worden 62383313  
pipa80@primus.com.au

President—Peter Evans 62383043  
paevans@yless4u.com.au

Senior Instructor—Robyn Slater 62383472  
slater3@aapt.net.au

---

[www.ponyclubnsw.org.au/wamboinponyclub](http://www.ponyclubnsw.org.au/wamboinponyclub)

---

<b>A. BAY</b>	<b>1. reddish brown coat with same, (or lighter) mane and tail</b>
<b>B. BLUE ROAN</b>	<b>2. golden coat with white mane and tail</b>
<b>C. BUCKSKIN</b>	<b>3. white horses are referred to as this</b>
<b>D. CHESTNUT</b>	<b>4. black and white patches</b>
<b>E. CREMELLO</b>	<b>5. mixture of chestnut and white hairs</b>
<b>F. DAPPLE GREY</b>	<b>6. reddish brown with black mane and tail</b>
<b>G. GREY</b>	<b>7. pale cream colour with cream mane and tail</b>
<b>H. PALOMINO</b>	<b>8. another name for chestnut</b>
<b>I. PIEBALD</b>	<b>9. brown and white patches</b>
<b>J. SKEWBALD</b>	<b>10. cream/caramel coat with black mane and tail</b>
<b>K. SORRELL</b>	<b>11. white or grey with 'rings' of darker grey hair</b>
<b>L. STRAWBERRY ROAN</b>	<b>12. a mixture of black and white hairs</b>

**Answers; A:6. B:12. C:10. D:1. E:7. F:11. G:3. H:2. I:4. J:9. K:8. L:5.**